

**2 bedroom, 2 bathroom  
913 square feet**

**mtnhousing.org**  
Turn Key Affordable Homeownership

For more information please contact:  
**Megan Kirby**  
tel: 828.254.4030, x122  
megan@mtnhousing.org



# 33

## Yarrow Meadow Road

Brand new Energy Star home in Weaverville. Walk to North Main Street commercial district. Short drive to Weaverville Plaza Shopping Center. Easy access to I-26 .

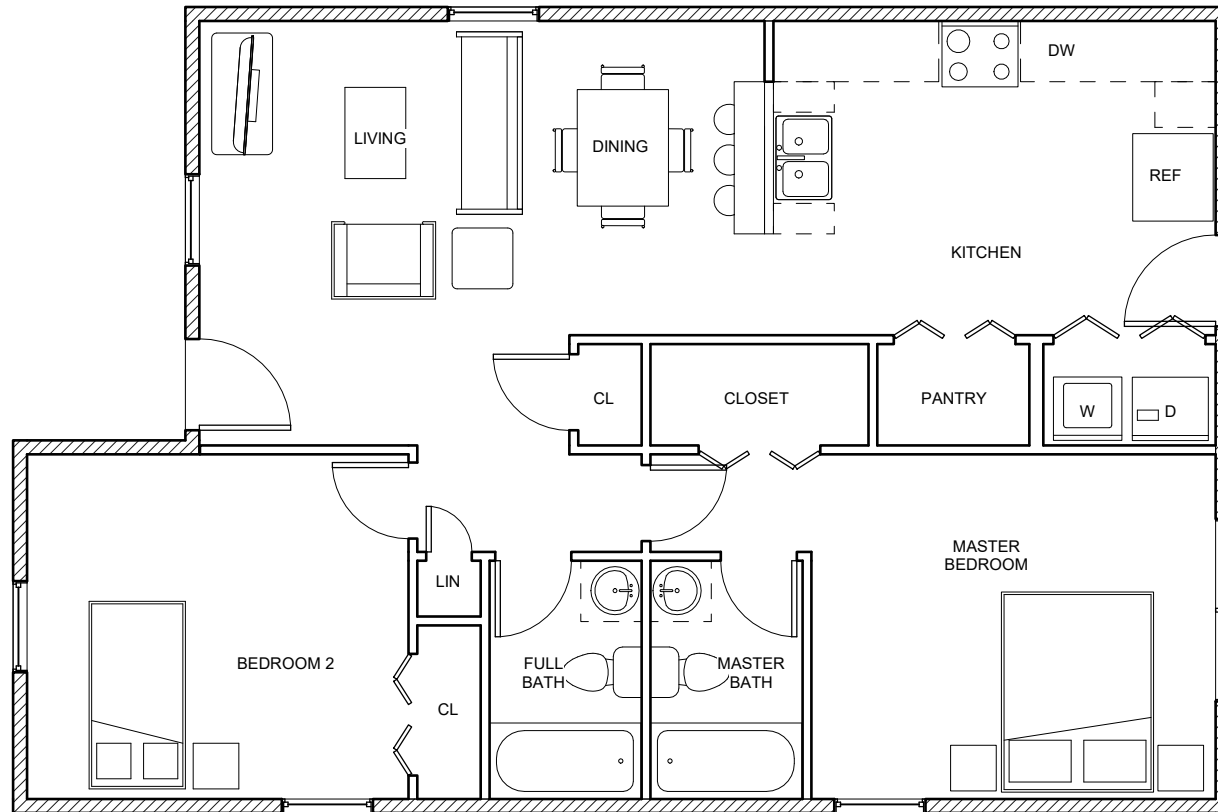
Open floor plan. Two bedrooms and two baths on one level. Covered front porch.

### Directions

From downtown Asheville, take 26 west, to exit 18. Turn right at the end of the ramp. Go to the first traffic light, turn right again, take a left on Critter Trail. The development is on the left. Yarrow Meadow Road is at the very top of the development.

# 33

## Yarrow Meadow Road



**2 bedroom, 2 bathroom  
913 square feet**

**[mtnhousing.org](http://mtnhousing.org)**  
Turn Key Affordable Homeownership



**INFORMATION**

**33 Yarrow Meadow Road**  
**2 bedroom, 2 bathroom,**  
**913 square feet**

**FEATURES**

- New Construction
- Energy Star home in Weaverville
- Close to Weaver Plaza shopping.
- Walk to N. Main downtown shopping.
- Open floor plan
- Durable laminate flooring
- Covered front porch

Income Eligibility	
Gross household income cannot exceed:	
Household Size	Income Limit
1	\$37,200
2	\$42,500
3	\$47,800
4	\$53,100
5	\$57,350

**mtnhousing.org**  
 Turn Key Affordable Homeownership



# 33 Yarrow Meadow Road

## Financing Example-NCHFA

<b>Purchase Price</b>	<b>\$227,000</b>
<b>Closing Costs estimate</b>	<b>+ \$4,000</b>
<b>Down Payment</b>	<b>- \$1,000</b>
<b>NCHFA Deferred Financing</b>	<b>- \$30,000</b>
<b>MHO Deferred Financing up to:</b>	<b>- \$42,000</b>
<b>Total Deferred Financing</b>	<b>\$75,000</b>
<b>First Mortgage Amount</b>	<b>\$155,000</b>
<b>Prinicipal &amp; Interest*</b>	<b>\$738</b>
<b>Tax estimate</b>	<b>\$165</b>
<b>Insurance estimate</b>	<b>\$60</b>
<b>Estimated Total Payment</b>	<b>\$963</b>

\* Based on a 30 year note with 4.00% interest.  
 Interest rates may vary.